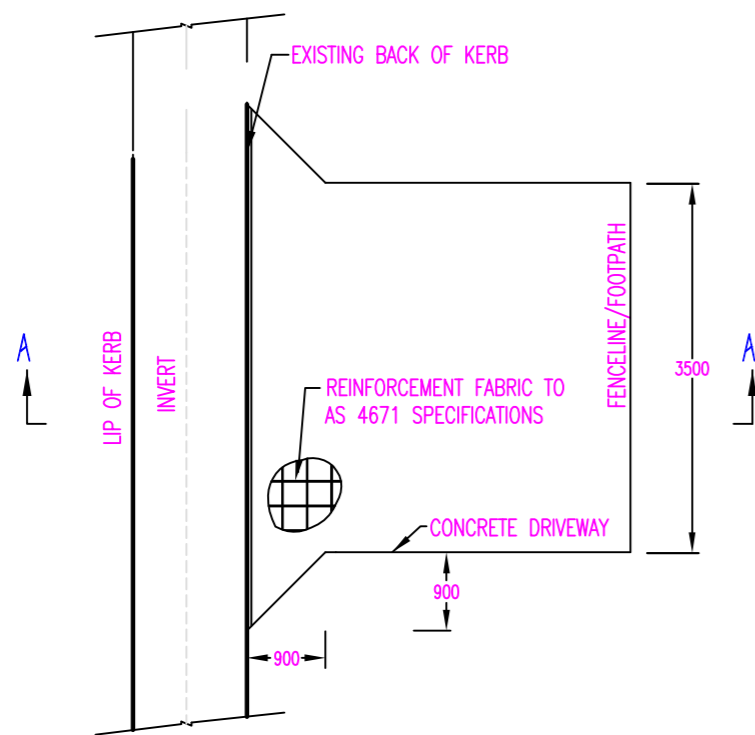


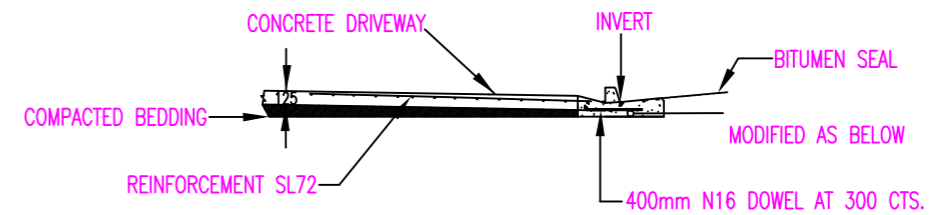
CROSS SECTION A-A



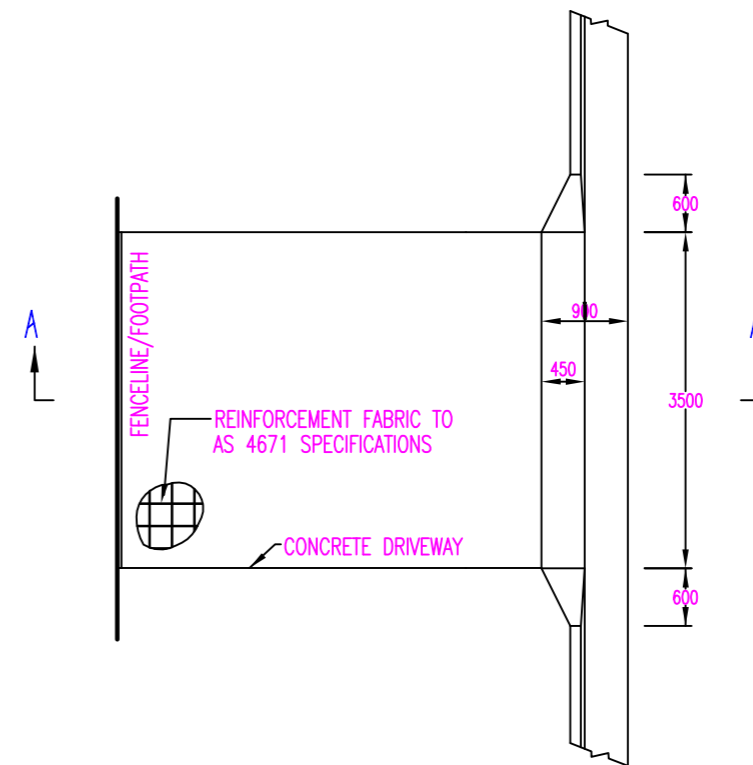
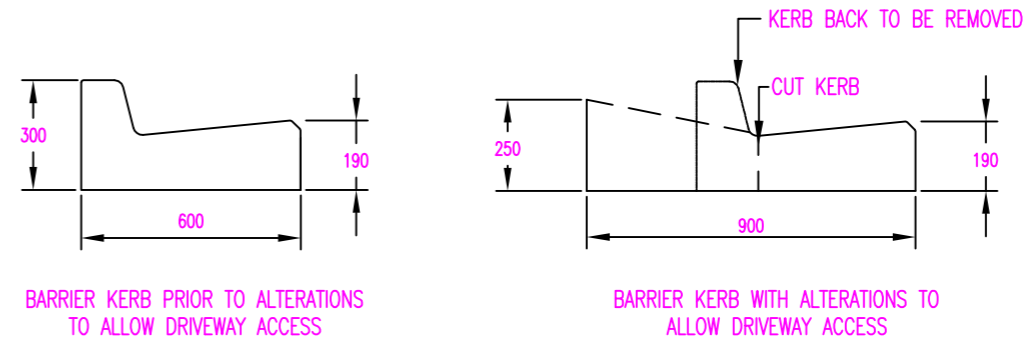
CONCRETE DRIVEWAY TO MOUNTABLE KERB & CHANNEL

NOTES

1. CROSSINGS ARE NOT DESIGNED FOR COMMERCIAL VEHICLES.
2. FOOTPATH SECTION TO VARY WHERE NECESSARY TO MATCH CONCRETE FOOTPATHS AND VERGE PROFILES.
3. CONCRETE N32 IN ACCORDANCE WITH AS 1379 AND AS 3600.
4. REINFORCEMENT FABRIC TO AS 4671, 50mm TOP AND EDGE COVER, LAP FABRIC 250mm.
5. EXPANSION JOINTS TO BE 10mm THICK, FULL DEPTH CLOSED CELL CROSS LINKED POLYETHYLENE FOAM INSTALLED TO MANUFACTURERS INSTRUCTIONS. SEALED WITH 10mm BEAD MASTIC/APPROVED SILICONE.
6. SEEK APPROVAL OF LOCATION AND LEVELS PRIOR TO EXCAVATION.
7. CONFIRM SERVICE LOCATIONS WITH RELEVANT AUTHORITIES ON SITE PRIOR TO COMMENCEMENT.



CROSS SECTION A-A



CONCRETE DRIVEWAY TO BARRIER KERB & CHANNEL



CHARTERS TOWERS REGIONAL COUNCIL
 12-14 MOSMAN ST, PO BOX 189
 CHARTERS TOWERS, QLD, 4820
 PH: 07 4761 5300 FAX: 07 4761 5344
 mail@charters Towers.qld.gov.au

STANDARD DRAWING – ROADS URBAN
 CONCRETE DRIVEWAYS

SURVEY:	SCALE:NTS
DATUM:	CHECKED: DAF DATE:11.8.14
DESIGN: DAF	APPROVED:C.SCOTT DATE:11.8.14
DRAWN DAF:	APPROVED:

SHEET 1 OF 1					
A3 PLAN REFERENCE No:					
A	B	C	D	E	F